

NIUMINCO GROUP LIMITED



**ANNUAL GENERAL MEETING PRESENTATION
26 NOVEMBER 2014**

Important Information



This presentation is not a prospectus nor an offer of securities for subscription or sale in any jurisdiction nor a securities recommendation.

The information in this presentation is an overview and does not contain all information necessary for investment decisions. In making investment decisions, investors should rely on their own examination of Niuminco Group Limited and consult with their own legal, tax, business and/or financial advisers in connection with any acquisition of securities.

The information contained in this presentation has been prepared in good faith by Niuminco Group Limited. However, no representation or warranty, express or implied, is made as to the completeness or adequacy of any statements, estimates, opinions or other information contained in this presentation.

To the maximum extent permitted by law, Niuminco Group Limited, its directors, officers, employees and agents disclaim liability for any loss or damage which may be suffered by any person through the use of, or reliance on, anything contained in or omitted from this presentation.

Certain information in this presentation refers to the intentions of Niuminco Group Limited, but these are not intended to be forecasts, forward looking statements, or statements about future matters for the purposes of the Corporations Act (Cth, Australia) or any other applicable law. The occurrence of events in the future are subject to risks, uncertainties and other factors that may cause Niuminco Group Limited's actual results, performance or achievements to differ from those referred to in this presentation to occur as contemplated.

The presentation contains only a synopsis of more detailed information to be published in relation to the matters described in this document and accordingly no reliance may be placed for any purpose whatsoever on the sufficiency or completeness of such information and to do so could potentially expose you to a significant risk of losing all of the property invested by you or incurring by you of additional liability. Recipients of this presentation should conduct their own investigation, evaluation and analysis of the business, data and property described in this document. In particular, any estimates or projections or opinions contained herein necessarily involve significant elements of subjective judgment, analysis and assumptions and you should satisfy yourself in relation to such matters.

The information in this report that relates to exploration results is based on Information reviewed by Ian Plimer (BSc [Hons], PhD) who is a Fellow of the Australasian Institute of Mining and Metallurgy. Professor Plimer is a director of Niuminco Group Limited and has sufficient experience relevant to the style of mineralisation and type of deposit under consideration and to the activity he is undertaking to qualify as a Competent Person as defined in the 2012 Edition of the Australasian Code for Reporting of Exploration Results, Mineral Resources and Ore Reserves. He consents to the inclusion in the report of the matters based on this information in the form and context in which it appears.

CORPORATE OVERVIEW



Board of Directors:

Terry Willsteed – Independent Chairman

Tracey Lake – Managing Director

Prof. Ian Plimer – Independent Director

Capital Structure:

Shares on issue 689,097,080

No outstanding options

ASX Code: NIU

POMSoX Code: NIU

Website: www.niuminco.com.au

2014 – THE YEAR IN REVIEW



- The acquisition of a 72.54% shareholding in TNT Mines Ltd, which holds advanced exploration assets in Tasmania.
- Granting of a 10 year extension to the Edie Creek mining lease ML144 through to 2022.
- Renewals of all May River and Bolobip exploration licences in PNG and all of TNT's licences in Tasmania.
- The successful re-commencement of pilot mining and gold/silver production at the Edie Creek mine.
- Achieving JORC 2012 compliant Inferred Mineral Resources for TNT's Great Pyramid and Royal George tin deposits.
- Significant 'across the board' reductions in Group operating costs.

OPERATING IN WORLD CLASS GEOLOGICAL PROVINCES



Papua New Guinea

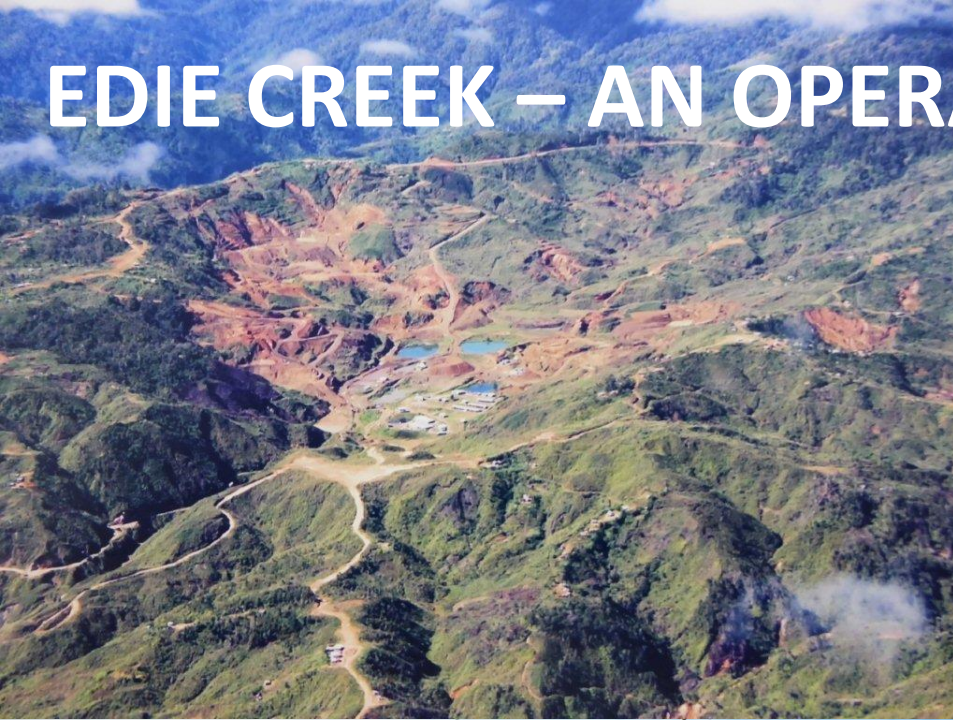
- Edie Creek Mine - producing gold & silver.
- May River - major copper gold porphyry and epithermal anomalies. Adjoins Frieda River deposit.
- Bolobip – 60km east of Ok Tedi, a major, drill ready, copper gold porphyry target.



Tasmania

- Aberfoyle tin and tungsten– includes Royal George, Great Pyramid and Lutwyche deposits.
- Moina tin, tungsten, fluorspar and magnetite deposit.
- Old Oonah mine tin/silver deposit.

EDIE CREEK – AN OPERATING MINE









Ore
Tubs

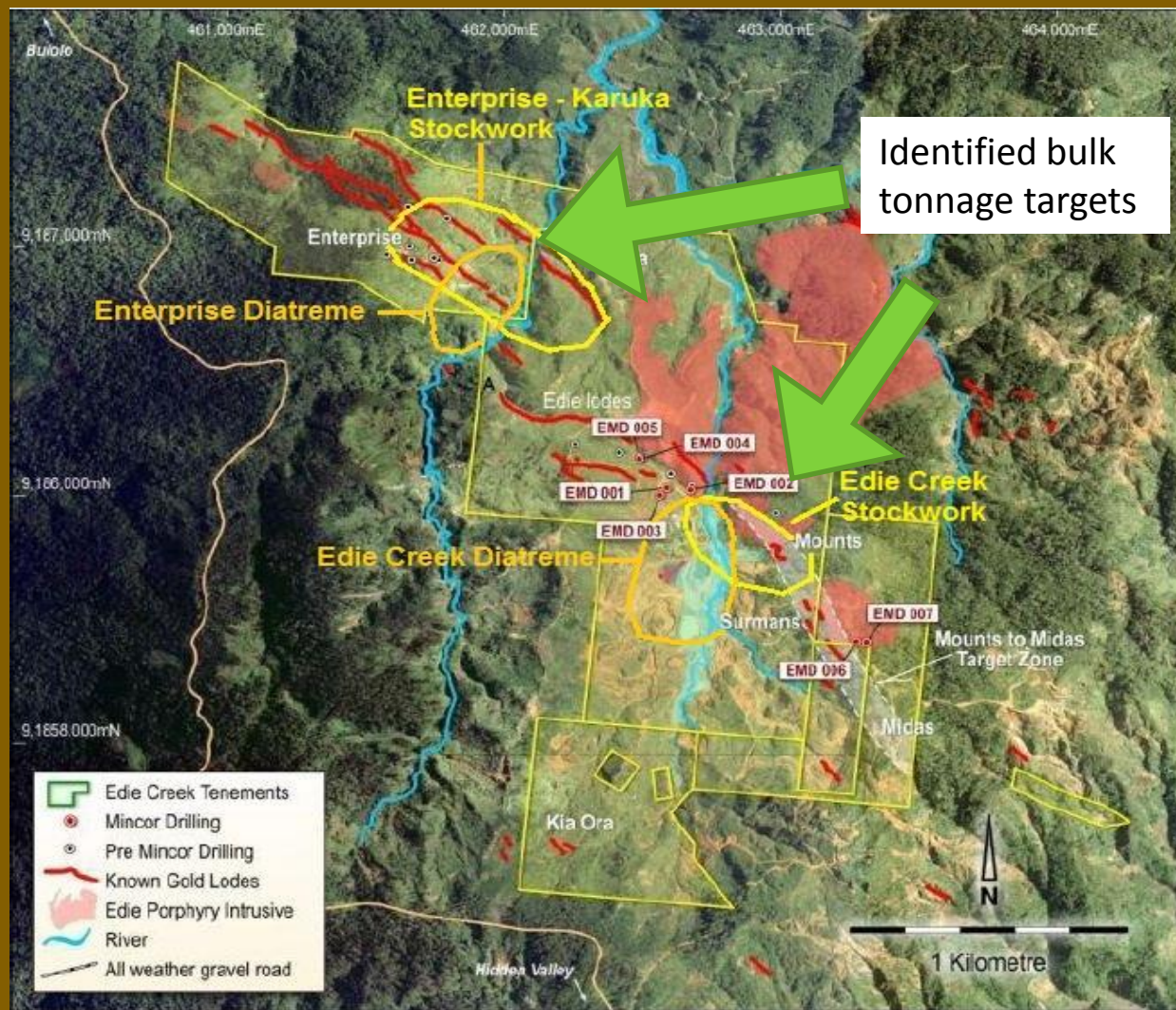
OR



Flow chart of
Gold Room
process



EDIE CREEK Epithermal Gold & Silver

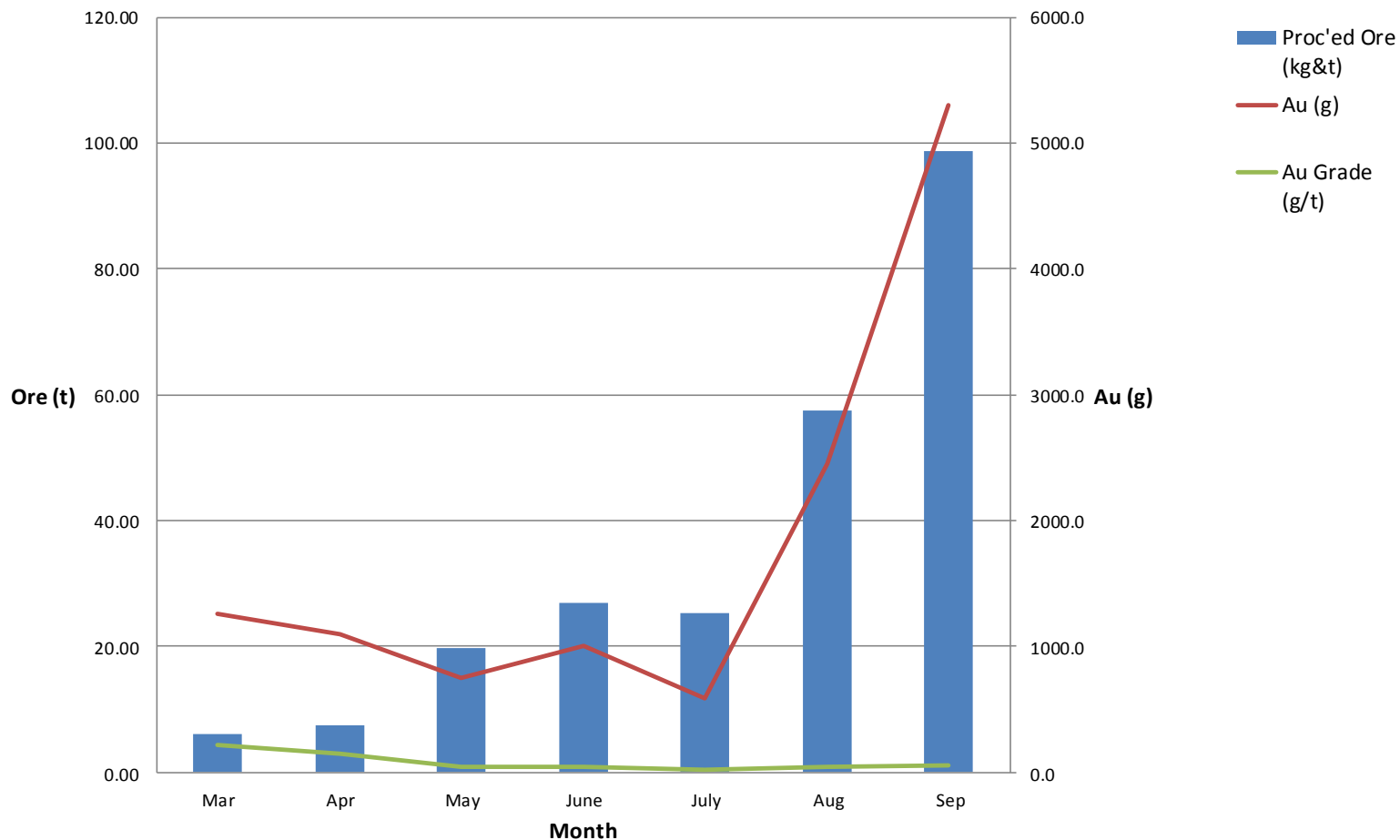


- High grade Au-Ag veins
- Lower grade bulk tonnage – a number of bodies with substantial economic potential identified.
- 1st stage drilling of 14 holes completed .
- 2nd stage drilling program of 10 holes proposed.
- Pilot mining and ore processing re-commenced February, 2014.
- Continuing ramp up of gold/silver production.

EDIE CREEK PRODUCTION



Gold produced, ore processed and grade by month



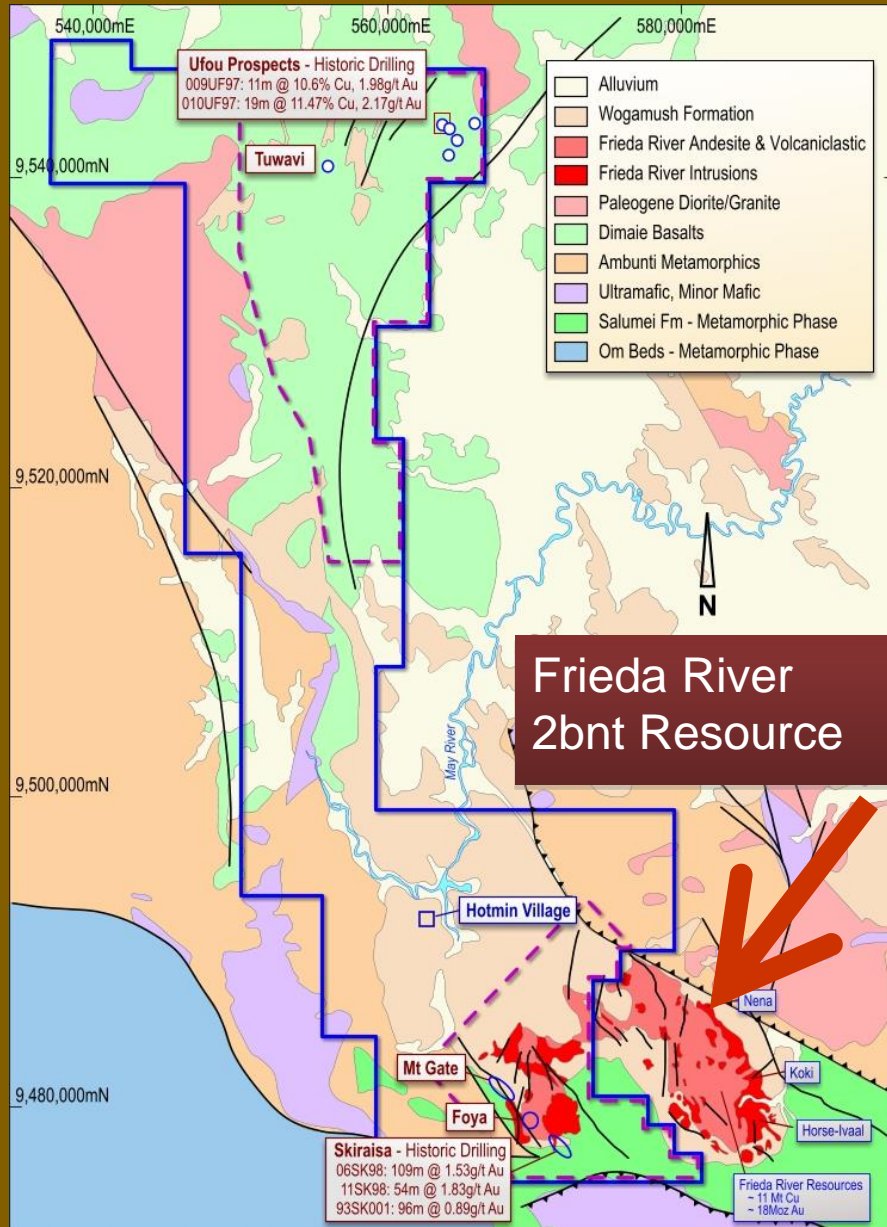
MAY RIVER - HOTMIN BASE



- Niuminco's base camp acts as a regional exploration base at Hotmin.
- Ideal locality in centre of May River Exploration Licence.
- Existing airstrip, and major supplies brought in by low-cost river transport.
- A major airborne geophysical survey completed.
- Airborne VTEM and ZTEM, covering North & South May River completed.



MAY RIVER – ADJOINS FRIEDA RIVER



SKIRASIA HISTORIC DRILLING:

06SK98

109m @ 1.53g/t Au

11SK98

54m @ 1.83g/t Au

93SK001

96m @ 0.89g/t Au

UFOU PROSPECTS:

009UF97

11m @ 10.6% Cu, 1.98g/t Au

010UF97

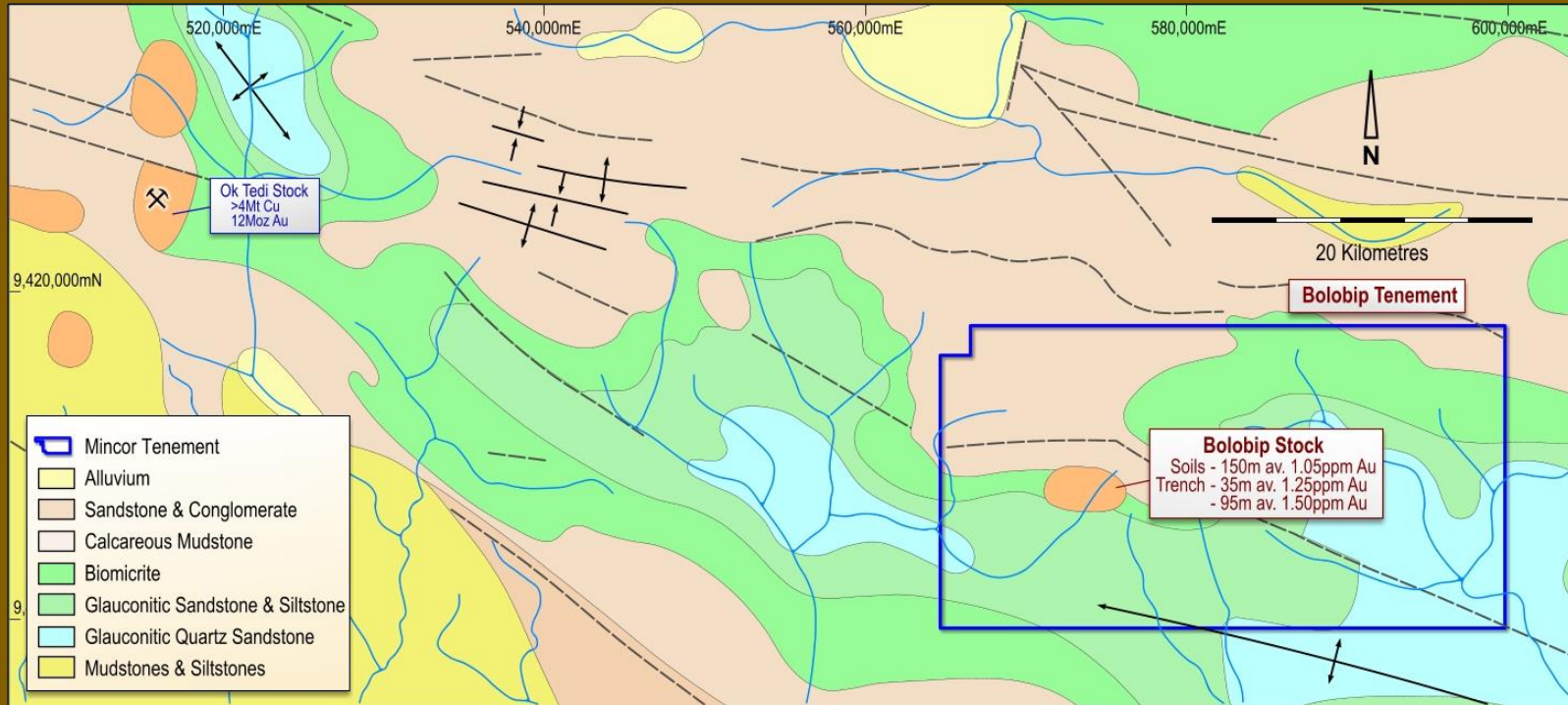
19m @ 11.47% Cu, 2.17g/t Au

BOLOBIP BASE CAMP



A MAJOR COPPER GOLD PORPHYRY TARGET 60KM EAST OF OK TEDI MINE

BOLOBIP



- A multi-phase intrusive complex. 3 drill targets ready to drill.
- Latest data shows coherent 1km diameter copper and gold anomaly, with peripheral lead and zinc.
- Classic geochemical signature of a leached cap above a mineralised copper-gold porphyry system.
- Extensive surface gold mineralisation in trench channel samples (CRA).

TASMANIAN PROJECTS



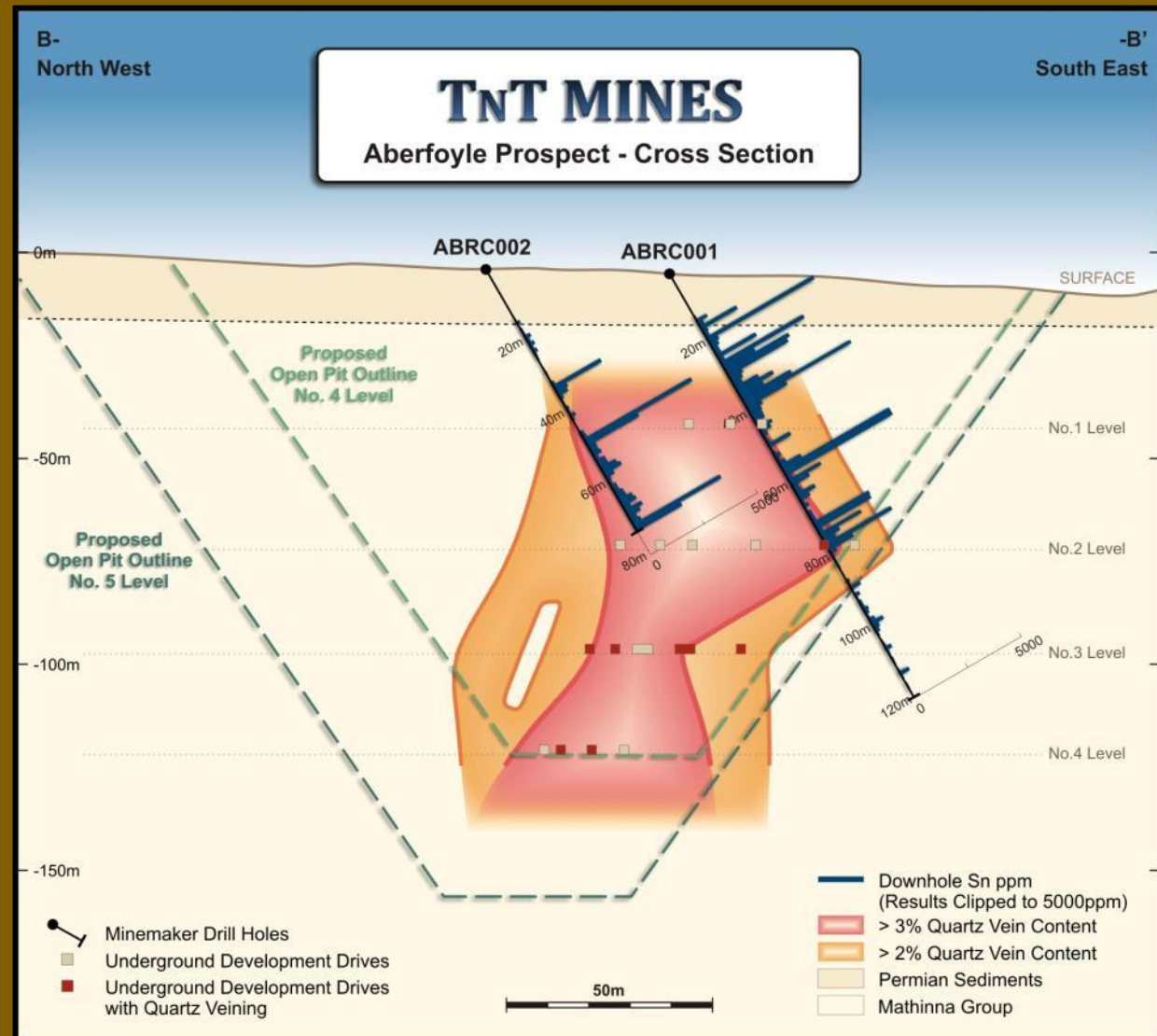
Initial focus on two advanced exploration assets:

- The Aberfoyle Tin & Tungsten Project;
Comprising the Aberfoyle/Lutwyche/Storey's Creek/Royal George/Great Pyramid tin and tungsten deposits.
- current JORC 2012 Inferred Mineral Resources for the Royal George and Great Pyramid deposits.
- The Moina Tin, Tungsten, Fluorspar and Magnetite Project.
- current JORC 2004 Inferred Mineral Resource.

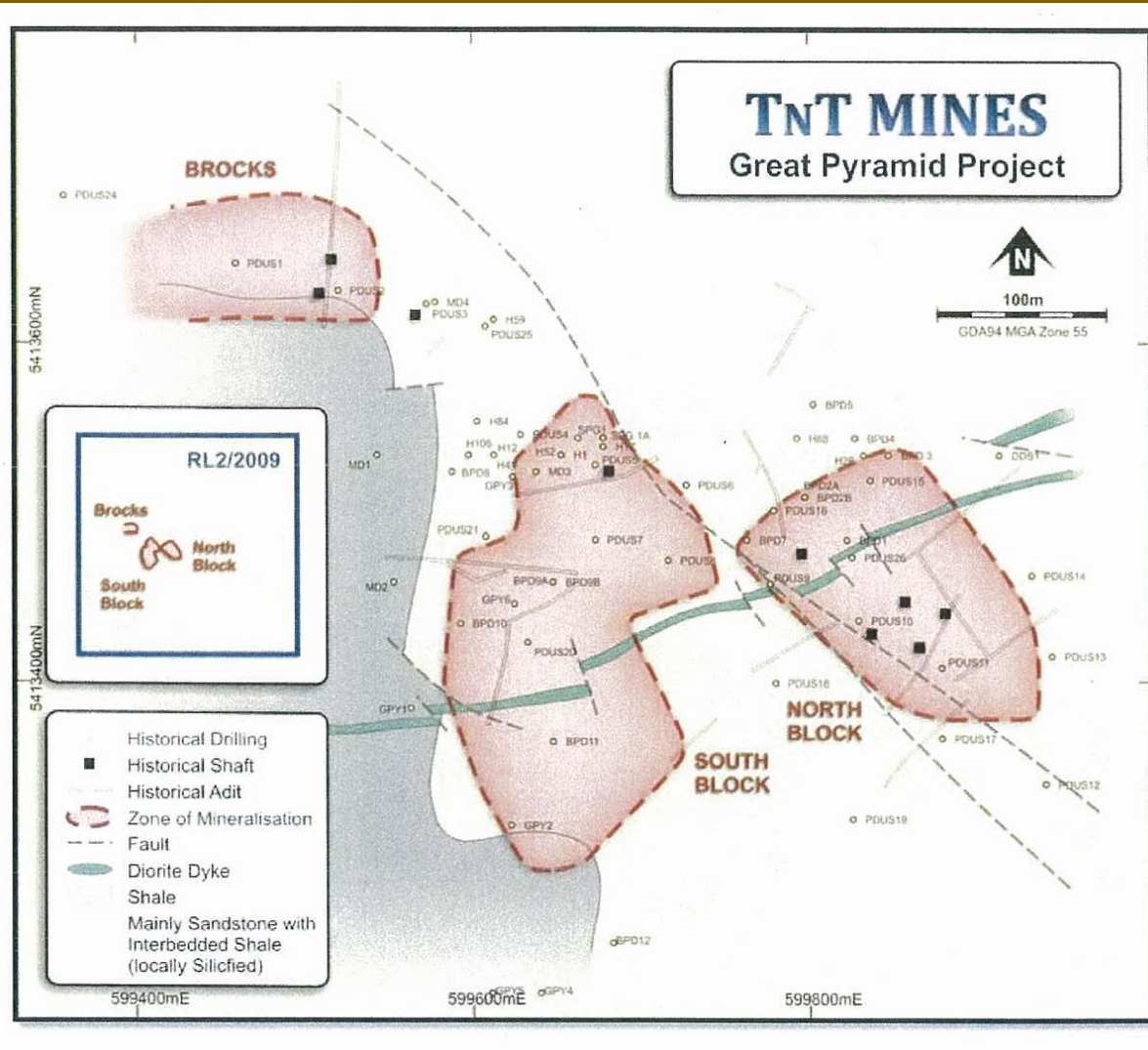
ABERFOYLE – TIN, TUNGSTEN



- Potential underpins TNT's valuation
- Development opportunity
- Potential for combined open-cut and underground mine feeding low CAPEX gravity separation plant
- Extensive historical data
- Resource update pending



GREAT PYRAMID – TIN



- Inferred Mineral Resource of 5.2m tonnes @ 0.2% Sn.
- Shallow, near surface deposit with low stripping ratio.
- Excellent infrastructure and access to site.
- Low CAPEX as planned operation is a satellite mine to Aberfoyle.

ROYAL GEORGE - TIN



- Inferred Mineral Resource of 800,000 tonnes at 0.33% tin for 2640 tonnes of contained tin using a 0.2% cut-off.

THE NEXT 12 MONTHS - THE FOCUS AND PLANS IN PNG



■ **EDIE CREEK**

- Successful ramp up of gold/silver production to continue to enable self-funded exploration of all PNG tenements.
- Immediate Stage 2 drilling of 10 holes in bulk tonnage target.
- If results positive, Stage 3 drilling of up to 50 holes with aim of JORC Inferred Resource.
- Continue metallurgical, mining and processing investigations with view to measured scale-up of mining and processing.

■ **BOLOBIP**

- Confirm 3 drill targets for 1000m of drilling and complete drilling.

■ **MAY RIVER (South May River Area)**

- Geological groundwork to define and confirm early drill targets and complete drilling.

THE NEXT 12 MONTHS - THE FOCUS AND PLANS IN TASMANIA



Aberfoyle Tin & Tungsten Project:

- Complete 13 drill holes at Lutwyche and up to 15 holes at Great Pyramid, with aim to achieve JORC 2012 Inferred Mineral Resource at Lutwyche and to increase the grade and size of the Great Pyramid Inferred Mineral Resource.

Moina Project:

- Upgrade current JORC 2004 Inferred Mineral Resource to JORC 2012 IMR.
- Continue metallurgical studies.